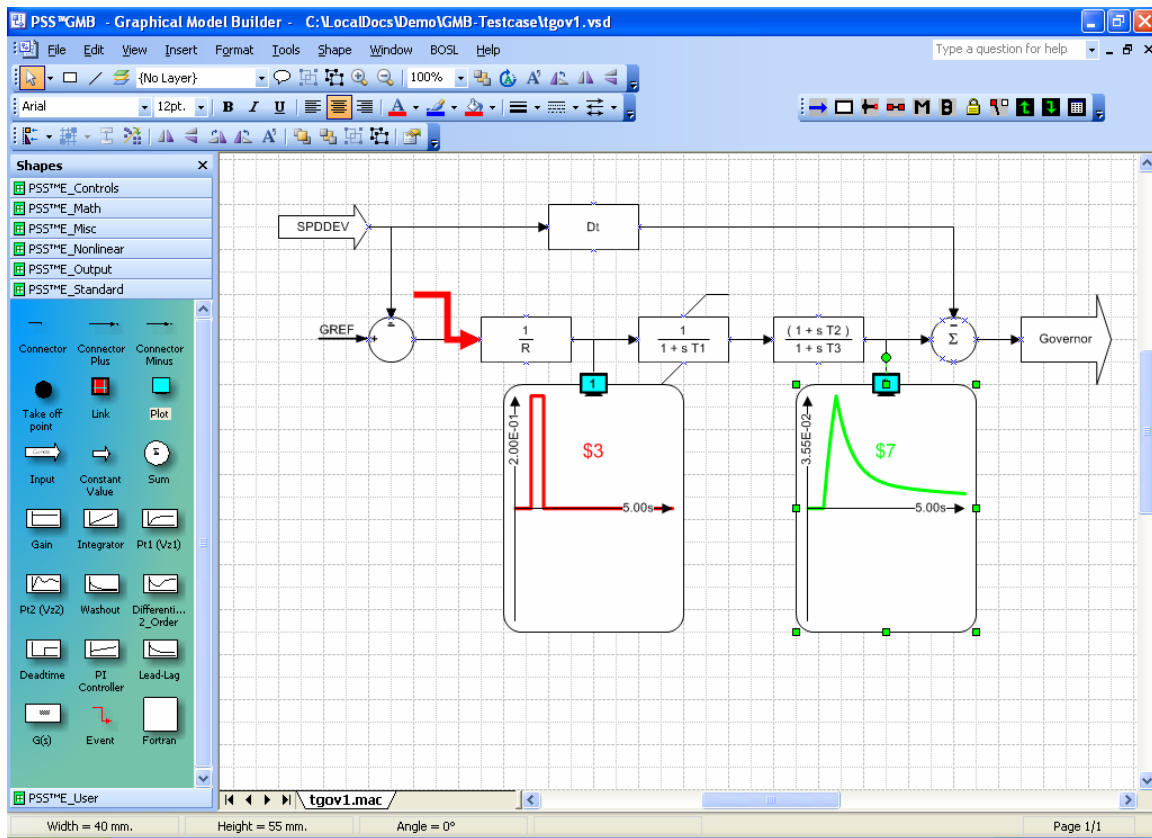


## Graphical Model Builder (GMB)

It's Arrived! After much anticipation, the Siemens Power Transmission & Distribution, Inc., Power Technologies International (Siemens PTI) Graphical Model Builder (GMB) is available as an add-on module for PSS<sup>TME</sup>.



### ***With the addition of GMB you can...***

- Rapidly create complex control models without writing code or using a compiler
- Easily prototype new controllers and test possible configurations
- No model for new equipment? Tweak an existing model
- Share GMB models with other GMB users
- Test model response with different data and different control loops
- Tune models, such as an exciter, for best performance

\* The GMB is an add-on module to the PSS<sup>TME</sup> base and has an additional cost.

## ***How GMB Works***

GMB is a PSS<sup>TM</sup>E add-on\* module that uses the Microsoft Visio® † graphical interface to build and simulate PSS<sup>TM</sup>E controller models. No need to learn a simulation language and no need for developing software or using compilers. Only the basic skills of control engineering and the use of Visio are needed.

- Graphical Model Builder works as an add-in to Microsoft Visio® and provides pre-defined graphic elements and their associated control model to represent a wide variety of fundamental control blocks.
- Fundamental control blocks in the GMB library include, for instance: time-delay, limits, summing, product, math and non-linear functions, output, and many additional control functions. All these blocks can be interconnected on the Visio diagram.
- User Macros can also be defined and added as standard blocks in the library.
- Model response to given inputs can be tested within the GMB environment before using the model in PSS<sup>TM</sup>E.

After performing model tests in the GMB environment, the GMB will export the model to PSS<sup>TM</sup>E for direct use in PSS<sup>TM</sup>E without a need for compiling.

## ***Evaluation Available***

A 25-hour evaluation copy of the GMB is available. Please complete and submit the form located at [http://www.pti-us.com/pti/software/psse/user\\_support.cfm](http://www.pti-us.com/pti/software/psse/user_support.cfm). Siemens PTI will then supply a time-locked 25-hour evaluation copy of the PSS<sup>TM</sup>E software including the GMB module.

## ***Pricing Information***

To obtain pricing information, please contact Michele Drebitko at [michele.drebitko@siemens.com](mailto:michele.drebitko@siemens.com).

---

\* The GMB is an add-on module to the PSS<sup>TM</sup>E base and has an additional cost.

† Microsoft® and Microsoft Visio® are registered trademarks of Microsoft Corporation.